

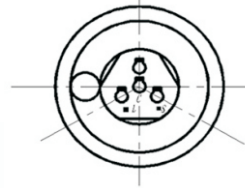
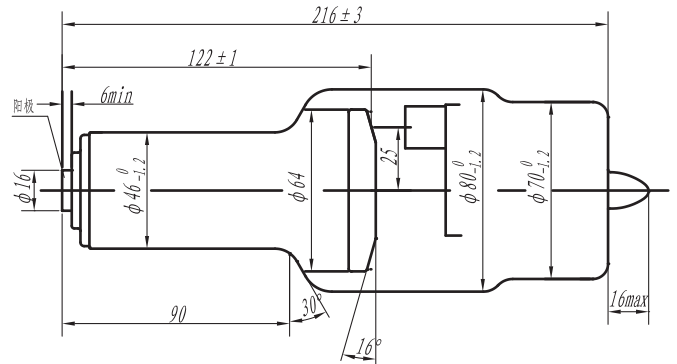
诊断用旋转阳极X射线管 | 执行标准 Standard : YZB/浙 0325 浙食药监械(准)字200第2310204号
管子型号TUBE TYPE | XD56-11、32/130

主要用途 APPLICATION



主要供医学诊断X射线机配套使用
It is designed for main applications used in x-ray equipment for medical diagnosis

外形与接线图 OUTLINE & WIRING DRAWING



- S 小焦点 Small focal spot
- C 公用线 Common
- L 大焦点 Large focal spot

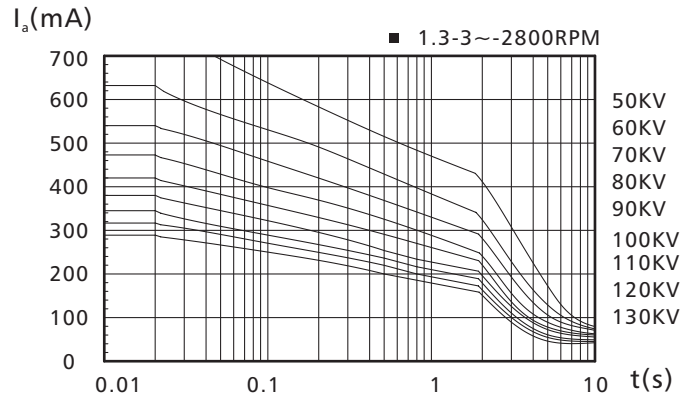
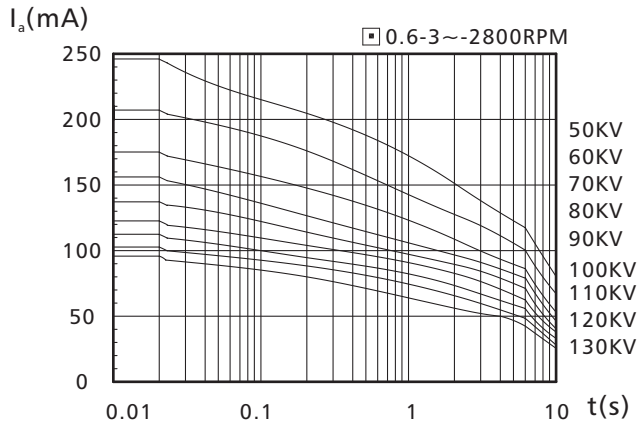
技术参数 TECHNICAL DATA

标称X射线管电压 nominal X-ray tube voltage(kV)	灯丝特性 filament characteristic	靶 target			阳极转速 anode speed (r/min)
		靶材 material	靶面角 angle(°)	直径 diameter(mm)	
130	(小焦点) $I_f=4.5A$ 时, $U_f=5.5V\pm 1V$	Re-W	16	64	2800
	(大焦点) $I_f=4.5A$ 时, $U_f=7.5V\pm 1V$				

固有滤过 inherent filtration (mmAl)	质量 weight (kg)	焦点标称值 nominal focal spot value	阳极标称输入功率 nominal anode input power (kW) (0.1s)	阳极最大热容量 maximum anode heat content(kJ)	最大连续热耗散 maximum continuous heat dissipation(W)
≥ 0.7	≤ 1.2	0.6/1.3	11/32	80(107kHU)	300

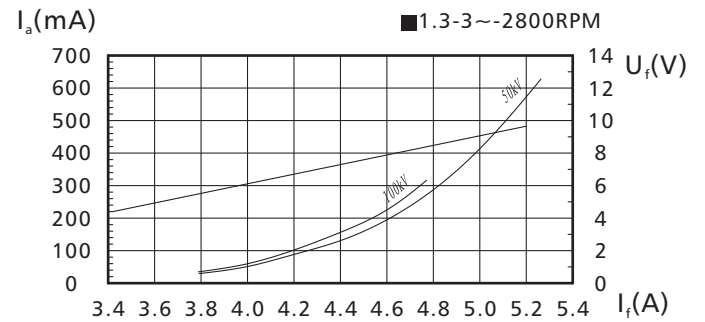
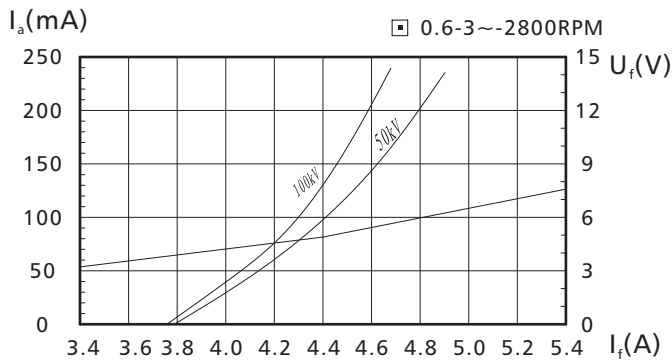
负载特性曲线

RATING CHARACTERISTICS



灯丝和阴极发射特性曲线

FILAMENT & CATHODE EMISSION CHARACTERISTICS



阳极加热冷却特性曲线

ANODE HEATING & COOLING CHARACTERISTICS

