

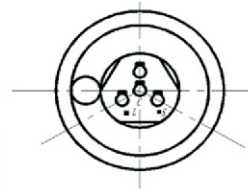
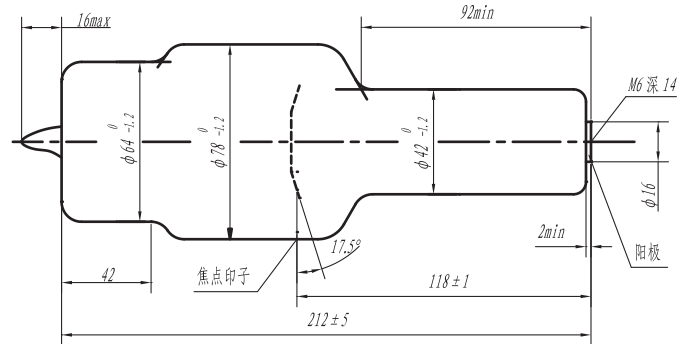
诊断用旋转阳极X射线管 | 执行标准：Standard YZB/浙 0325 浙食药监械(准)字200第2310204号
管子型号TUBE TYPE | XD55-10/100

主要用途 APPLICATION



主要供医学诊断X射线机配套使用
It is designed for main applications used in x-ray equipment for medical diagnosis

外形与接线图 OUTLINE & WIRING DRAWING



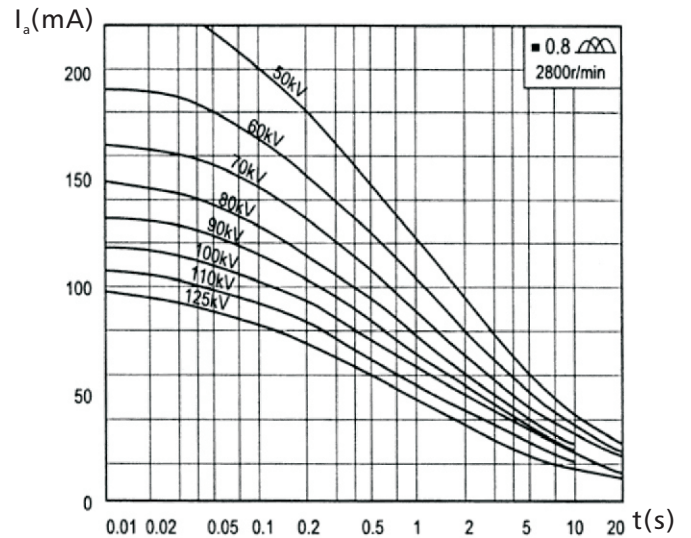
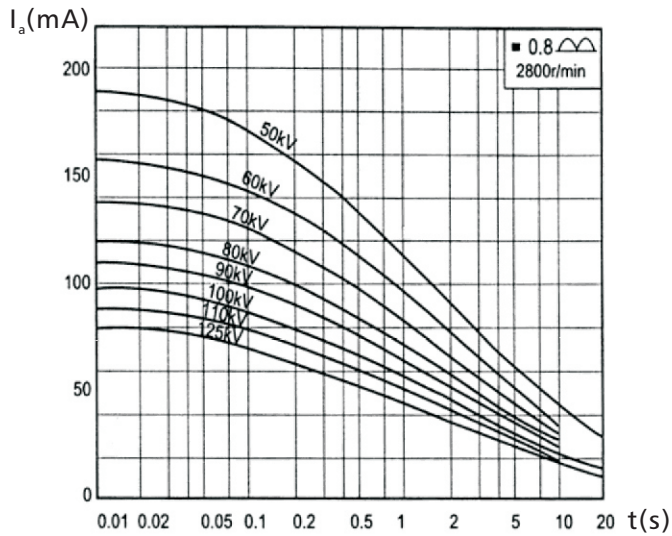
- S 小焦点 Small focal spot
- C 公用线 Common
- L 大焦点 Large focal spot

技术参数 TECHNICAL DATA

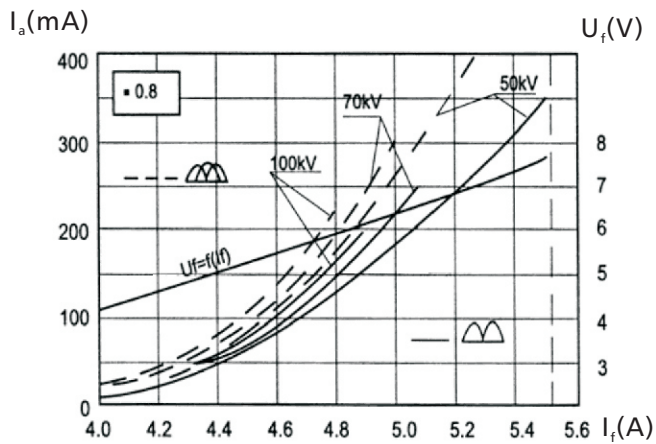
标称X射线管电压 nominal X-ray tube voltage(kV)	灯丝特性 filament characteristic	靶 target			阳极转速 anode speed (r/min)
		靶材 material	靶面角 angle(°)	直径 diameter(mm)	
100	$I_f=4.5A$ 时, $U_f=6V-7V$	W	17.5	55	2800

固有滤过 inherent filtration (mmAl)	质量 weight (kg)	焦点标称值 nominal focal spot value	阳极标称输入功率 nominal anode input power (kW) (0.1s)	阳极最大热容量 maximum anode heat content(kJ)	最大连续热耗散 maximum continuous heat dissipation(W)
0.8-1.2	≤1.2	0.8	10	44(60kHU)	250

负载特性曲线 RATING CHARACTERISTIC



灯丝和阴极发射特性曲线 FILAMENT & CATHODE EMISSION CHARACTERISTIC



阳极加热冷却特性曲线 ANODE HEATING & COOLING CHARACTERISTIC

