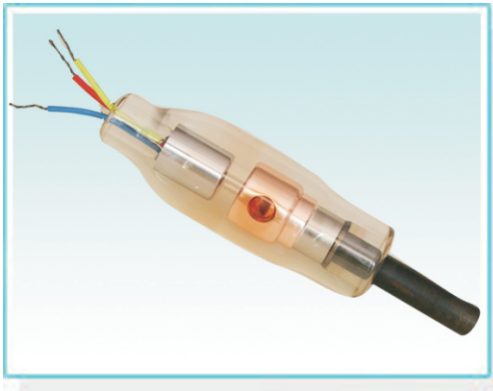


诊断用固定阳极X射线管 | 执行标准 Standard : YZB/浙 0326 浙食药监械(准)字200第2310012号

管子型号TUBE TYPE | XD4-2、9/100

主要用途

APPLICATION

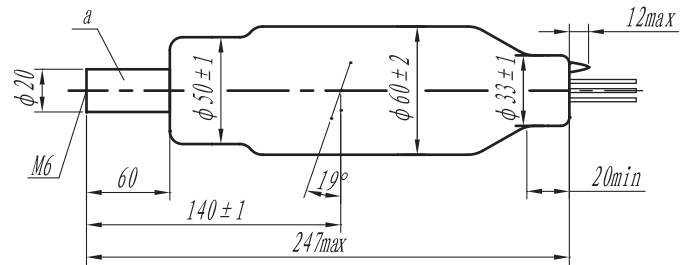


主要供医学诊断X射线机配套使用

It is designed for main applications used in x-ray equipment for medical diagnosis

外形与接线图

OUTLINE & WIRING DRAWING



a 阳极 anode

S 小焦点(红) small focal spot(red)

C 公用线(黄) common(yellow)

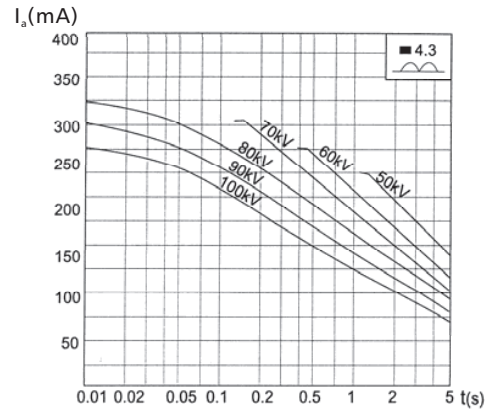
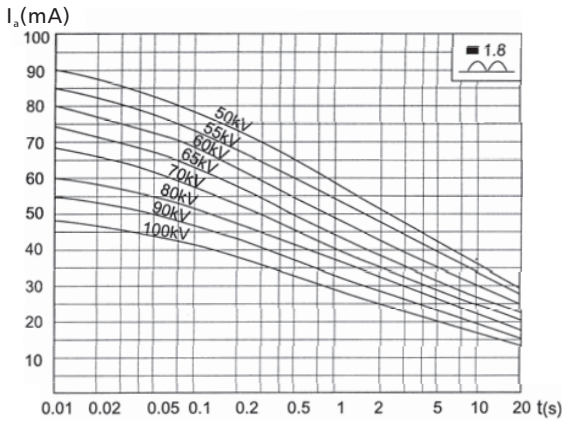
L 大焦点(蓝) large focal spot(blue)

技术参数

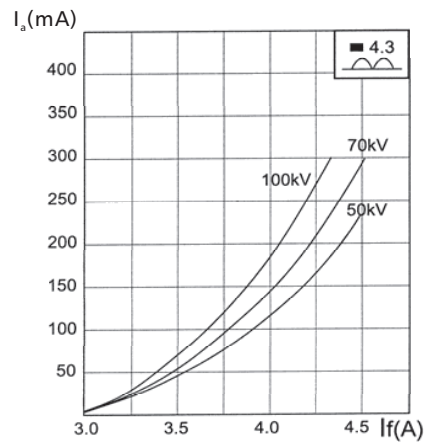
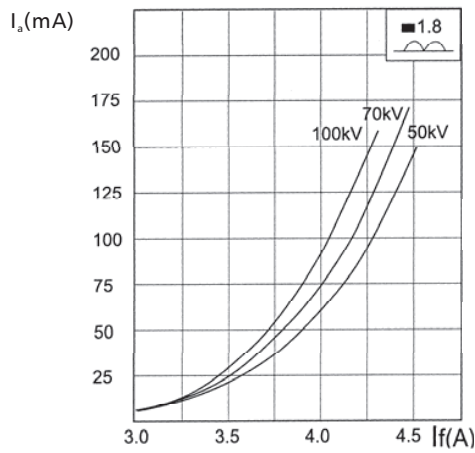
TECHNICAL DATA

标称X射线管电压 nominal X-ray tube voltage (kV)	靶 target		灯丝特性 filament characteristic	焦点标称值 nominal focal spot value
	靶材 material	靶面角 angle(°)		
100	W	19	(小焦点) $I_f=4.5A$ 时, $U_f=5V\pm0.5V$ (大焦点) $I_f=4.5A$ 时, $U_f=10V\pm1V$	1.8/4.3
阳极标称输入功率 nominal anode input power (kW) (1s)		固有滤过 inherent filtration (mmAl)		质量 weight (kg)
2/9		≤ 1.0		≤ 1

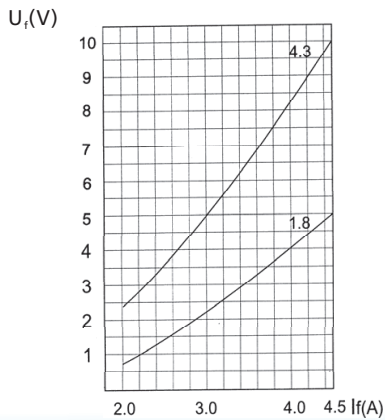
负载特性曲线 RATING CHARACTERISTICS



阴极发射特性曲线 CATHODE EMISSION CHARACTERISTIC



灯丝发射特性曲线 CATHODE EMISSION CHARACTERISTIC



阳极加热冷却特性曲线 ANODE HEATING & COOLING CHARACTERISTICS

