

**NANJING PERLOVE MEDICAL EQUIPMENT CO.,LTD.**

Add: No.168 Kaiyuan Road, Jiangning District, Nanjing, 211100, China

Tel: +86-25-87187780 +86-25-68571666-9350 9353

Fax: +86-25-87187780

Http://www.perlove.com.cn

E-mail: overseas@perlove.com.cn

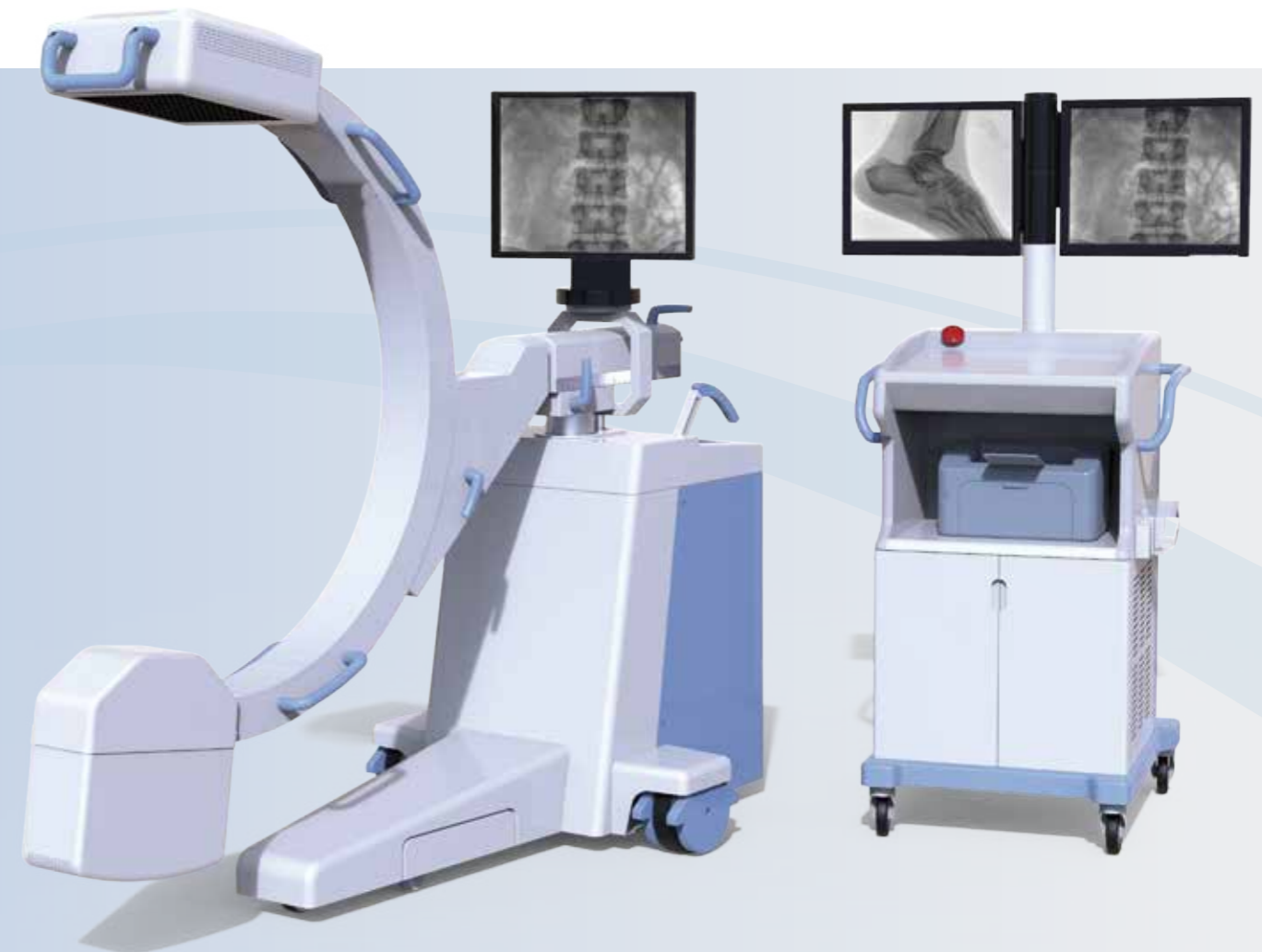


**PERLOVE  
MEDICAL**



**OUR UPCOMING  
EXHIBITIONS:**

You can see more details on our website  
Http://www.perlove.com.cn



**PERLOVE MEDICAL**

**For Overseas Market:** Nanjing Perlove Medical Equipment Co.,Ltd.

**For Domestic Market:** Nanjing Perlove Medical Equipment Co.,Ltd.

Beijing Per-Builders Science and Technology Co.,Ltd.

Zhuhai Perlead Medical Equipment Co.,Ltd.

# PLX118F

Mobile Digital FPD C-arm System

Version 1.0 Year 2017

Http://www.perlove.com.cn



## The state-of-art dynamic flat panel detector

- Larger view**
- Higher resolution**
- Lower noise**



## Advanced digital image technology with humanized design

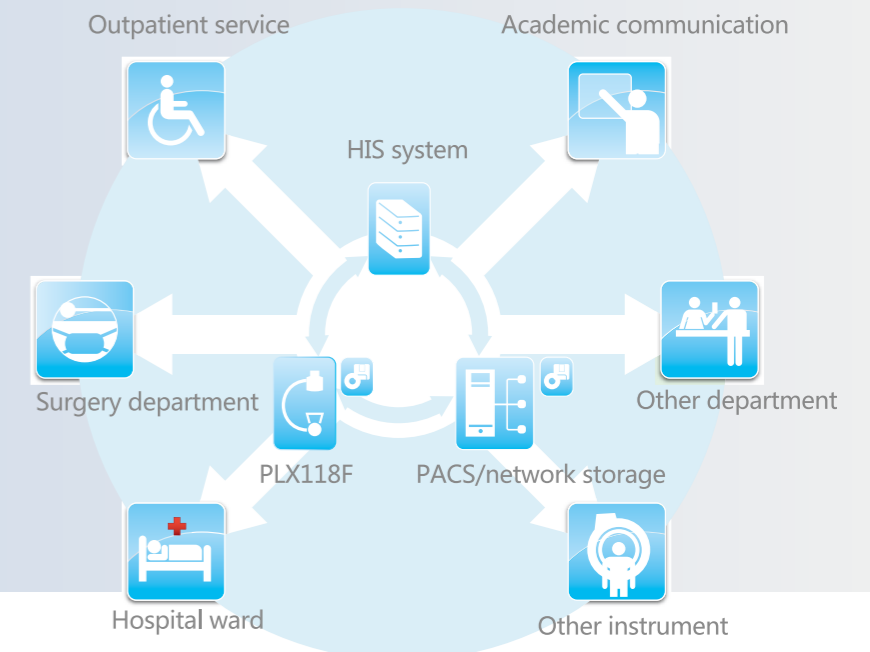
### Friendly user interface

Human graphic LCD touch-screen with accurate APR parameters setting realizes convenient operation.



- Hand controller on C-arm stand controls the mechanical and collimator movement, improves your work flow even you are away from the unit.
- RCDP - rapid calculate display platform  
GPU-based dynamic real-time image processing technology makes it easy to get sharp image of various body parts.

- Seamless connection with cloud PACS system for information sharing and remote diagnosing.
- Remote maintenance.
- Self-diagnosis with error-code displaying.



## Lower dose Sharper image.

- Digital pulse mode to ensure lower dose and sharper image.
- Intelligent variable-frequency pulse technology ensures high quality X-ray at efficient dose.

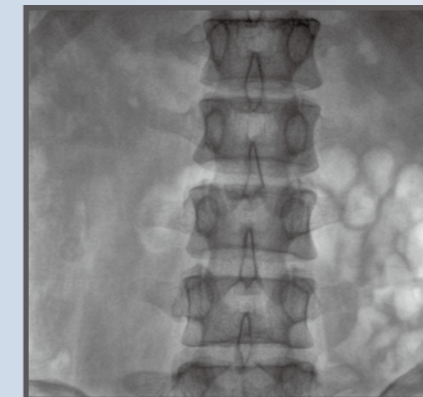
- Perfect digital imaging chain makes the routine operation easily as follow:

- |                           |                               |
|---------------------------|-------------------------------|
| ✓ Orthopedics department  | ✓ Spine surgery               |
| ✓ General surgery         | ✓ Pain surgery                |
| ✓ Orthopedic surgery      | ✓ Gastroenterology department |
| ✓ Traumatology department | ✓ Gynecology                  |
| ✓ Urinary surgery         |                               |

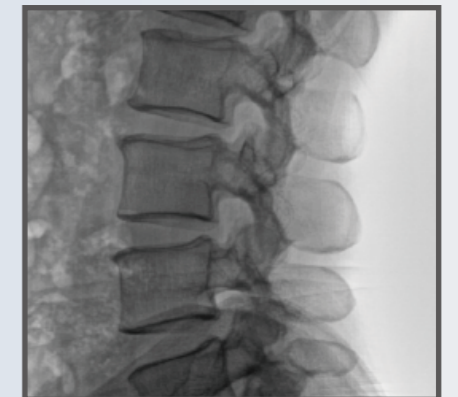
- DSI(Digital Spot Film)
- Red light cross localization



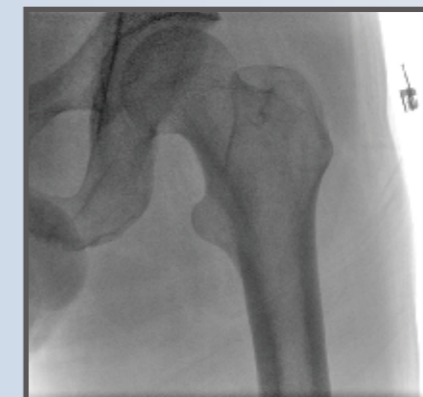
✓ Lumbar fluoroscopy



✓ Lumbar vertebrae fluoroscopy



✓ Pelvis fluoroscopy



✓ Limbs fluoroscopy



**High-quality images ensure the accurate diagnosis.**

**Faster positioning Higher efficiency**

*Free rotation without dead space*



360° horizontal movement to satisfy complex positioning

Unique design of electric auxiliary support arm make the movement of machine more stable.



Convenient and reliable C-arm sliding with counter-balance



Wide range electric elevating meet different operating tables

- Integrated generator with compact C-arm frame suitable for various operating rooms



Large forward, backward and swing movement around axis.

Item	PLX118F
Power Output	5kW
Inverter Frequency	110kHz
Continuous Fluoroscopy Mode (manual & automatic)	Tube Voltage: 40–120kV
	Tube Current: 0.3–4mA
Pulse Fluoroscopy	Tube Voltage: 40–120kV
	Tube Current: 0.3–30mA
	Intelligent variable-frequency technology
Photography Mode	Tube Voltage: 40–120kV
	Tube Current: 25–100mA
	mAs: 1.0mAs–280mAs
Counter balance	